

Ulazni podaci - Konstrukcija

Tabela materijala

No	Naziv materijala	E[kN/m ²]	μ	γ [kN/m ³]	α [1/C]	Em[kN/m ²]	μ m
1	Beton MB 30	3.150e+7	0.20	25.00	1.000e-5	3.150e+7	0.20

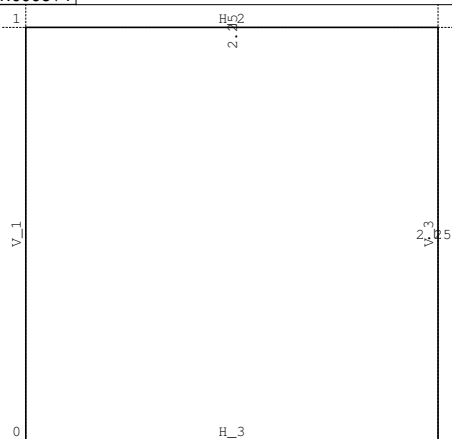
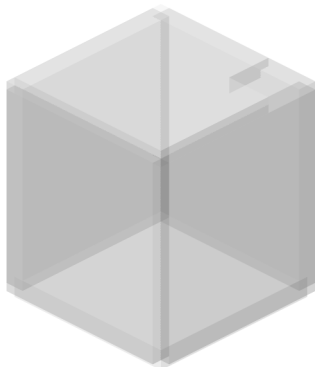
Setovi ploča

No	d[m]	e[m]	Materijal	Tip proračuna	Ortotropija	E2[kN/m ²]	G[kN/m ²]	α
<1>	0.250	0.125	1	Tanka ploča	Izotropna			
<2>	0.200	0.100	1	Tanka ploča	Izotropna			

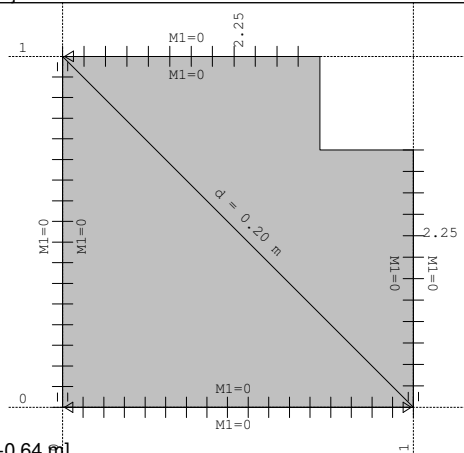
ST: Em x 1, E x 0.01, γ x 1; SE: Em x 1, E x 1, γ x 1;

Setovi površinskih ležajeva

Set	K,R1	K,R2	K,R3
1	1.000e+10	1.000e+10	1.000e+4

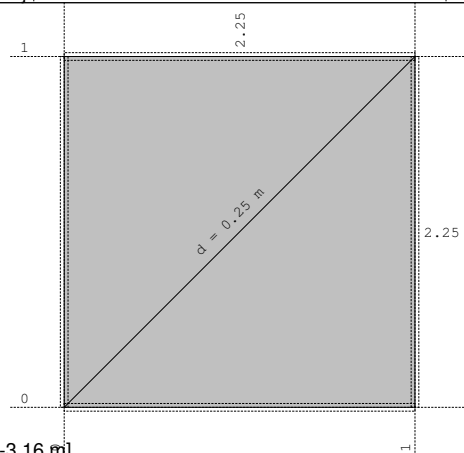


Izometrija

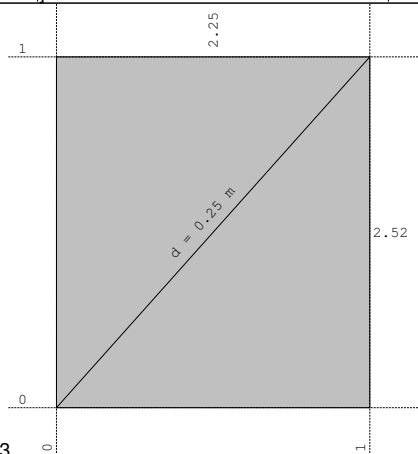


Nivo: [-0.64 m]

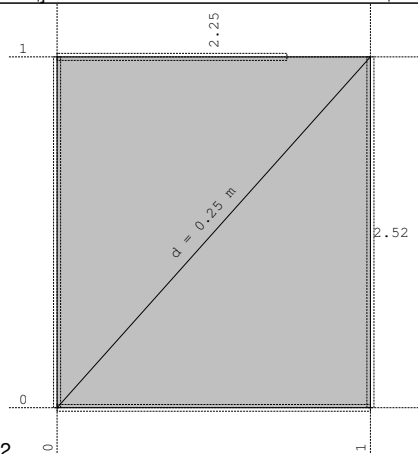
Dispozicija okvira



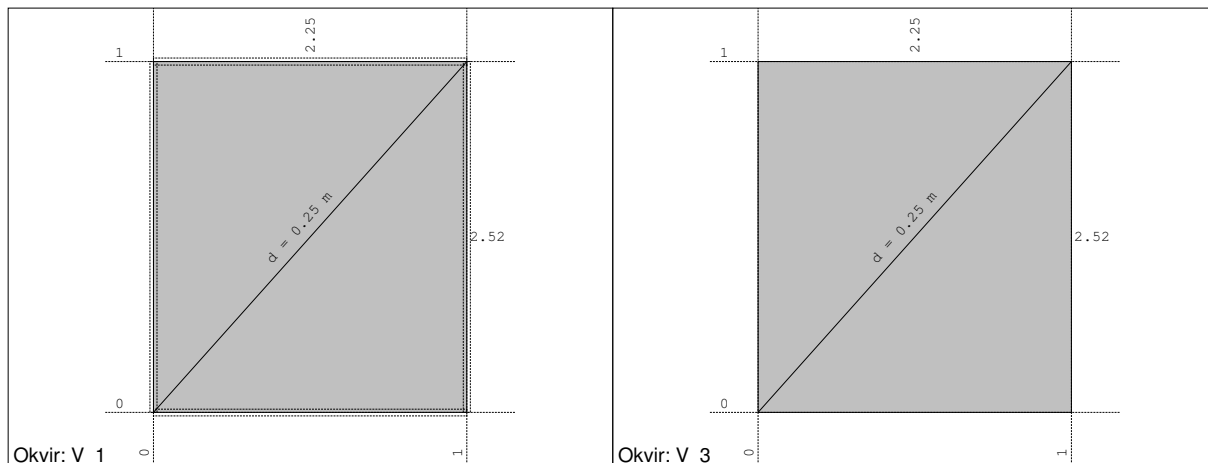
Nivo: [-3.16 m]



Okvir: H_3



Okvir: H_2

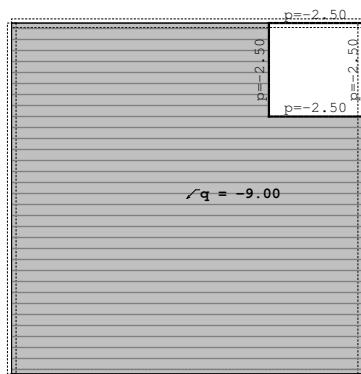


Ulazni podaci - Opterećenje

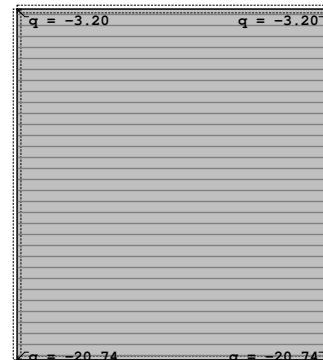
Lista slučajeva opterećenja

LC	Naziv	pX [kN]	pY [kN]	pZ [kN]
1	STALNO (g)	0.00	0.00	-245.23
2	TLO	-0.00	-0.00	0.00
3	VODA	-0.00	0.00	0.00
4	KORISNO	-0.00	0.00	-97.02
5	Komb.: 1.35xI+1.35xII+1.5xIII+1.5xIV	-0.00	0.00	-476.59

Opt. 1: STALNO (g)

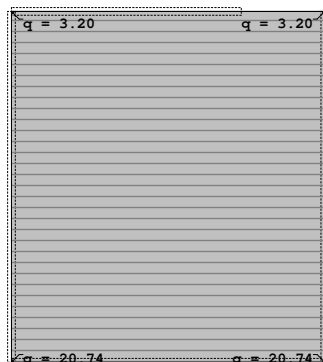


Opt. 2: TLO



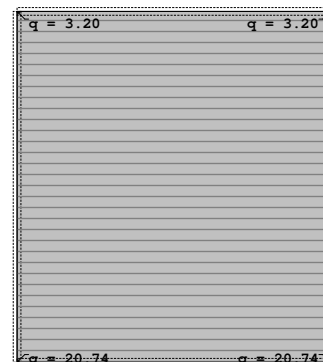
Nivo: [-0.64 m]

Opt. 2: TLO



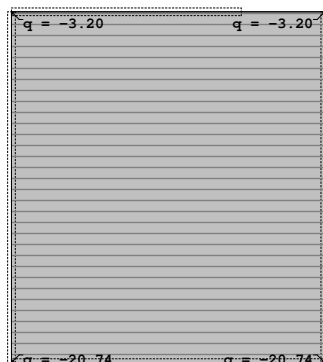
Okvir: H 3

Opt. 2: TLO



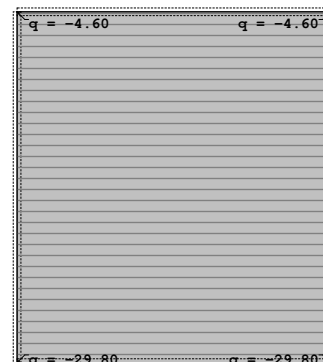
Okvir: H 2

Opt. 2: TLO



Okvir: V 1

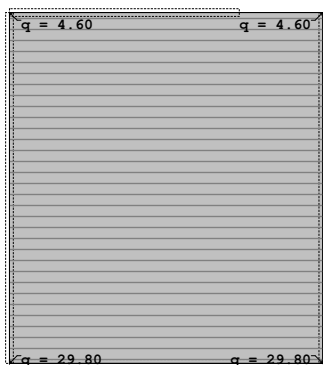
Opt. 3: VODA



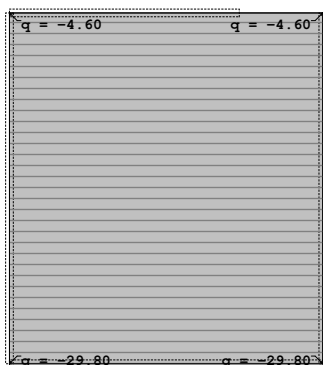
Okvir: V 3

Okvir: H 3

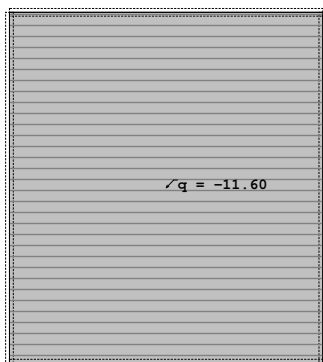
Opt. 3: VODA



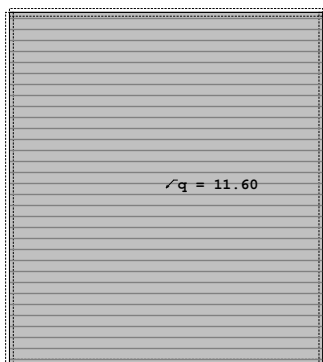
Okvir: H 2
Opt. 3: VODA



Okvir: V 3
Opt. 4: KORISNO

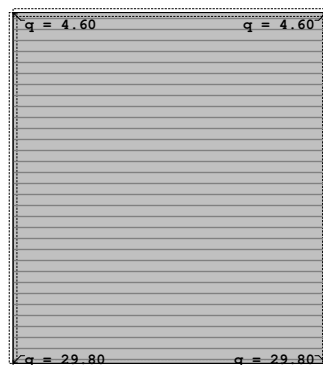


Okvir: H 3
Opt. 4: KORISNO

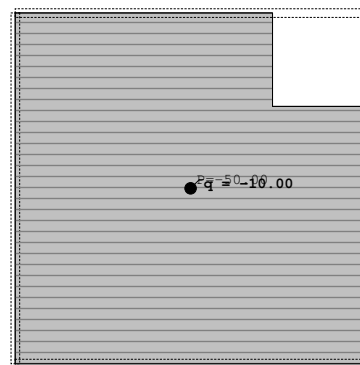


Okvir: V 1

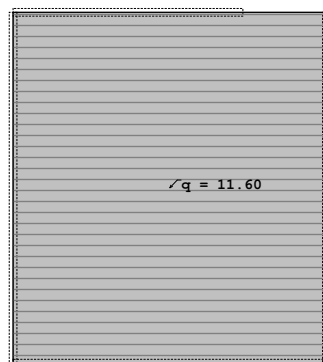
Opt. 3: VODA



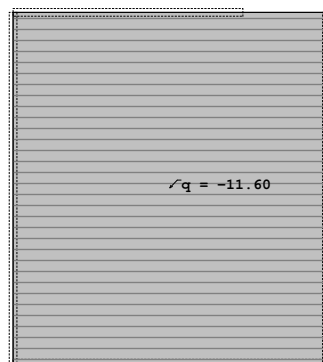
Okvir: V 1
Opt. 4: KORISNO



Nivo: [-0.64 m]
Opt. 4: KORISNO



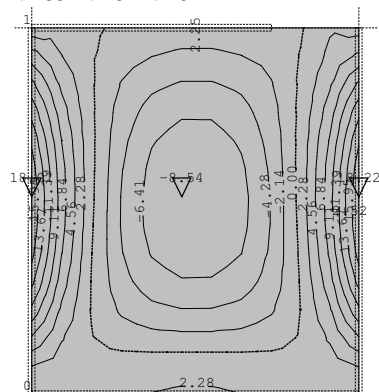
Okvir: H 2
Opt. 4: KORISNO



Okvir: V 3

Statički proračun

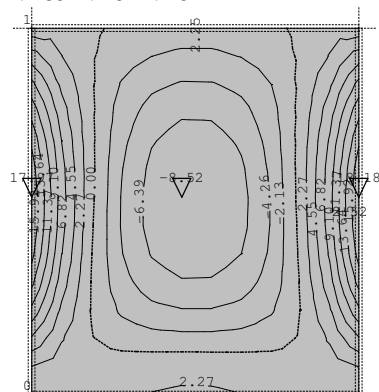
Opt. 5: 1.35xI+1.35xII+1.5xIII+1.5xIV



Okvir: H_2

Utjecaji u ploči: max M_x = 18.22 / min M_x = -8.54 kNm/m

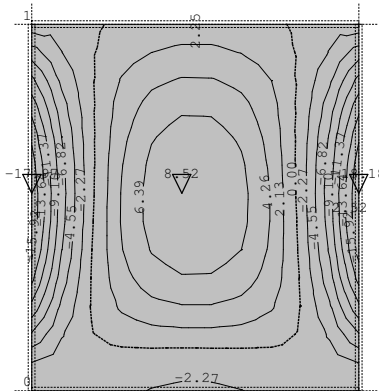
Opt. 5: 1.35xI+1.35xII+1.5xIII+1.5xIV



Okvir: V_1

Utjecaji u ploči: max M_x = 18.18 / min M_x = -8.52 kNm/m

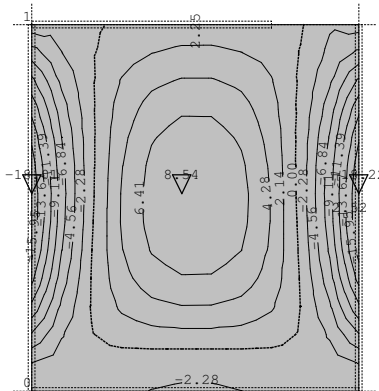
Opt. 5: 1.35xI+1.35xII+1.5xIII+1.5xIV



Okvir: H_3

Utjecaji u ploči: max M_x = 8.52 / min M_x = -18.18 kNm/m

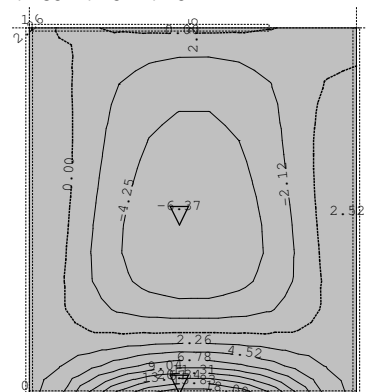
Opt. 5: 1.35xI+1.35xII+1.5xIII+1.5xIV



Okvir: V_3

Utjecaji u ploči: max M_x = 8.54 / min M_x = -18.22 kNm/m

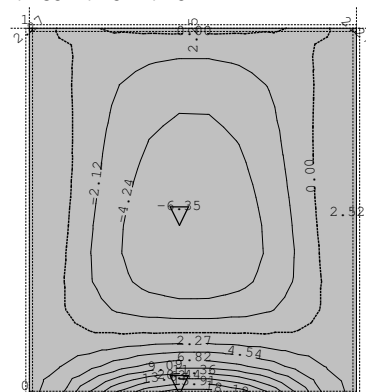
Opt. 5: 1.35xI+1.35xII+1.5xIII+1.5xIV



Okvir: H_2

Utjecaji u ploči: max M_y = 20.34 / min M_y = -6.37 kNm/m

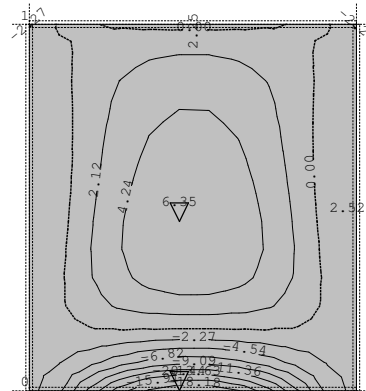
Opt. 5: 1.35xI+1.35xII+1.5xIII+1.5xIV



Okvir: V_1

Utjecaji u ploči: max M_y = 20.44 / min M_y = -6.35 kNm/m

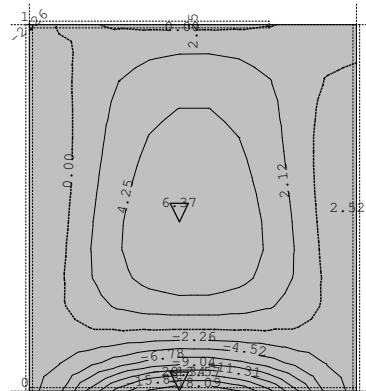
Opt. 5: 1.35xI+1.35xII+1.5xIII+1.5xIV



Okvir: H_3

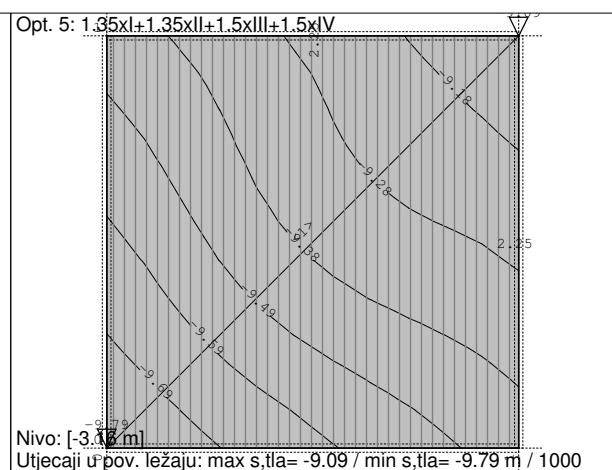
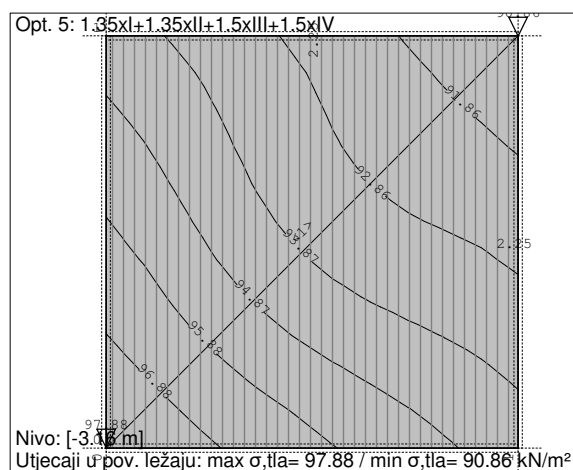
Utjecaji u ploči: max M_y = 6.35 / min M_y = -20.44 kNm/m

Opt. 5: 1.35xI+1.35xII+1.5xIII+1.5xIV



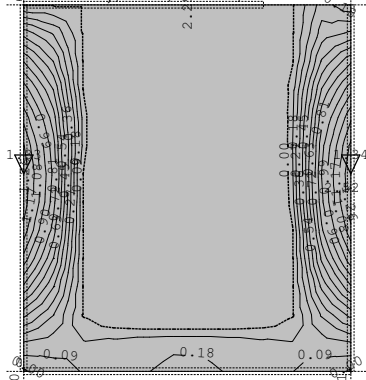
Okvir: V_3

Utjecaji u ploči: max M_y = 6.37 / min M_y = -20.34 kNm/m



Dimenzioniranje (beton)

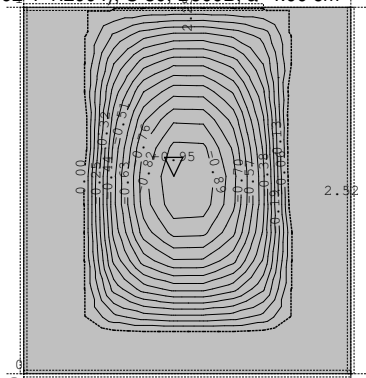
Mjerodavno opterećenje: 1.35xI+1.35xII+1.50xIII+1.50xIV
EC 2 (EN 1992-1-1:2004), C 30, B500B, a=4.00 cm



Okvir: H_2

Aa - d.zona - Pravac 1 - max Aa1,d= 1.34 cm²/m

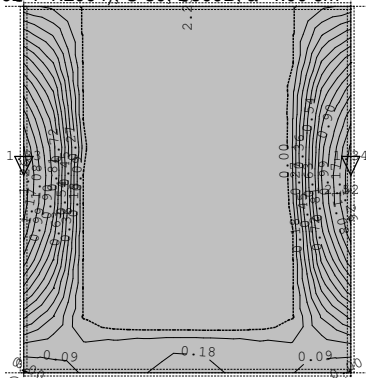
Mjerodavno opterećenje: 1.35xI+1.35xII+1.50xIII+1.50xIV
EC 2 (EN 1992-1-1:2004), C 30, B500B, a=4.00 cm



Okvir: H_2

Aa - g.zona - Pravac 1 - max Aa1,g= -0.95 cm²/m

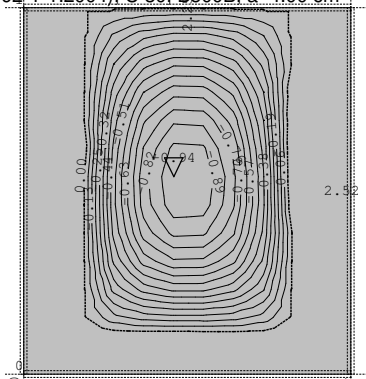
Mjerodavno opterećenje: 1.35xI+1.35xII+1.50xIII+1.50xIV
EC 2 (EN 1992-1-1:2004), C 30, B500B, a=4.00 cm



Okvir: V_1

Aa - d.zona - Pravac 1 - max Aa1,d= 1.34 cm²/m

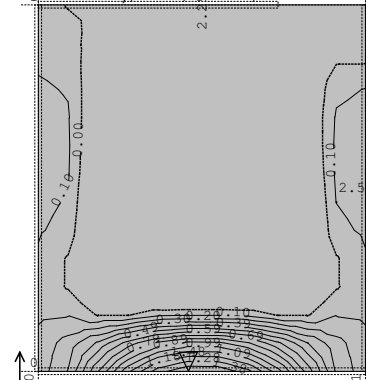
Mjerodavno opterećenje: 1.35xI+1.35xII+1.50xIII+1.50xIV
EC 2 (EN 1992-1-1:2004), C 30, B500B, a=4.00 cm



Okvir: V_1

Aa - g.zona - Pravac 1 - max Aa1,g= -0.94 cm²/m

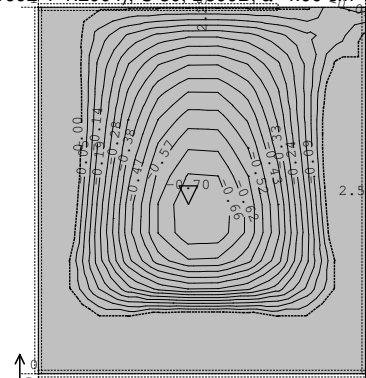
Mjerodavno opterećenje: 1.35xI+1.35xII+1.50xIII+1.50xIV
EC 2 (EN 1992-1-1:2004), C 30, B500B, a=4.00 cm



Okvir: H_2

Aa - d.zona - Pravac 2 - max Aa2,d= 1.48 cm²/m

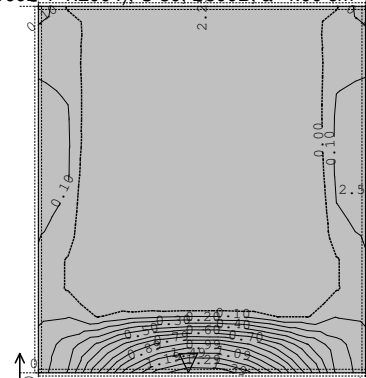
Mjerodavno opterećenje: 1.35xI+1.35xII+1.50xIII+1.50xIV
EC 2 (EN 1992-1-1:2004), C 30, B500B, a=4.00 cm



Okvir: H_2

Aa - g.zona - Pravac 2 - max Aa2,g= -0.70 cm²/m

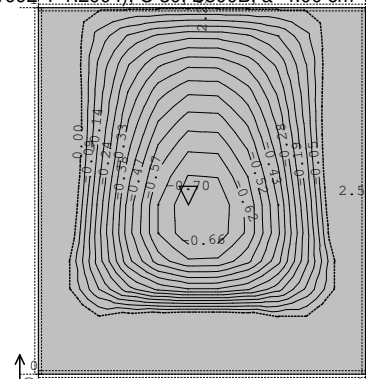
Mjerodavno opterećenje: 1.35xI+1.35xII+1.50xIII+1.50xIV
EC 2 (EN 1992-1-1:2004), C 30, B500B, a=4.00 cm



Okvir: V_1

Aa - d.zona - Pravac 2 - max Aa2,d= 1.49 cm²/m

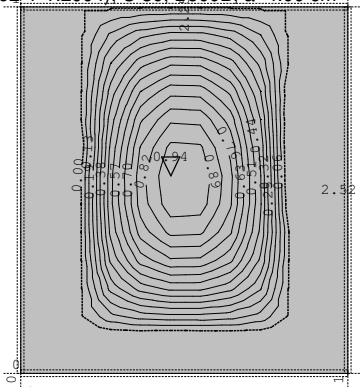
Mjerodavno opterećenje: 1.35xI+1.35xII+1.50xIII+1.50xIV
EC 2 (EN 1992-1-1:2004), C 30, B500B, a=4.00 cm



Okvir: V_1

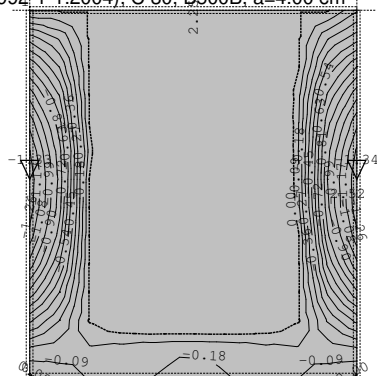
Aa - g.zona - Pravac 2 - max Aa2,g= -0.70 cm²/m

Mjerodavno opterećenje: 1.35xI+1.35xII+1.50xIII+1.50xIV
EC 2 (EN 1992-1-1:2004), C 30, B500B, a=4.00 cm



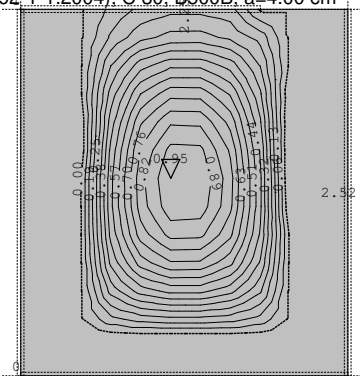
Okvir: H_2
Aa - d.zona - Pravac 1 - max Aa1,d= 0.94 cm²/m

Mjerodavno opterećenje: 1.35xI+1.35xII+1.50xIII+1.50xIV
EC 2 (EN 1992-1-1:2004), C 30, B500B, a=4.00 cm



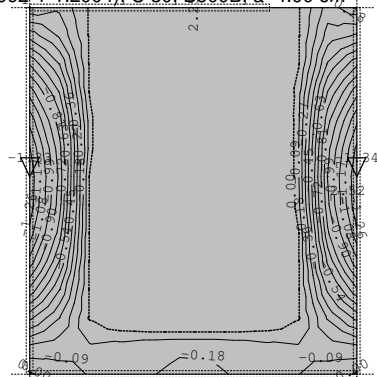
Okvir: H_2
Aa - g.zona - Pravac 1 - max Aa1,g= -1.34 cm²/m

Mjerodavno opterećenje: 1.35xI+1.35xII+1.50xIII+1.50xIV
EC 2 (EN 1992-1-1:2004), C 30, B500B, a=4.00 cm



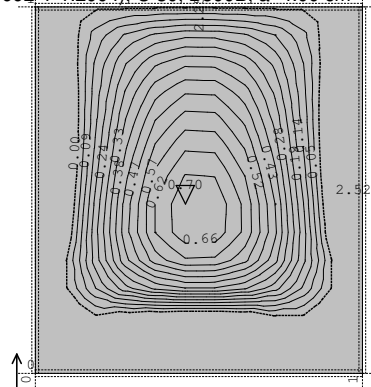
Okvir: V_2
Aa - d.zona - Pravac 1 - max Aa1,d= 0.95 cm²/m

Mjerodavno opterećenje: 1.35xI+1.35xII+1.50xIII+1.50xIV
EC 2 (EN 1992-1-1:2004), C 30, B500B, a=4.00 cm



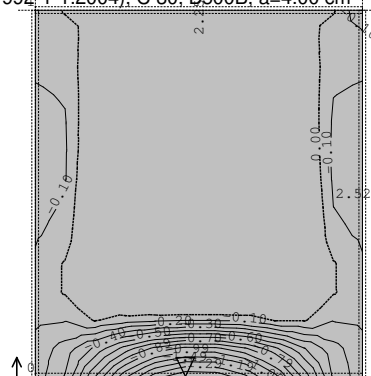
Okvir: V_2
Aa - g.zona - Pravac 1 - max Aa1,g= -1.34 cm²/m

Mjerodavno opterećenje: 1.35xI+1.35xII+1.50xIII+1.50xIV
EC 2 (EN 1992-1-1:2004), C 30, B500B, a=4.00 cm



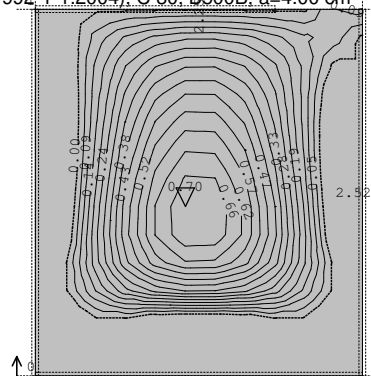
Okvir: H_3
Aa - d.zona - Pravac 2 - max Aa2,d= 0.70 cm²/m

Mjerodavno opterećenje: 1.35xI+1.35xII+1.50xIII+1.50xIV
EC 2 (EN 1992-1-1:2004), C 30, B500B, a=4.00 cm



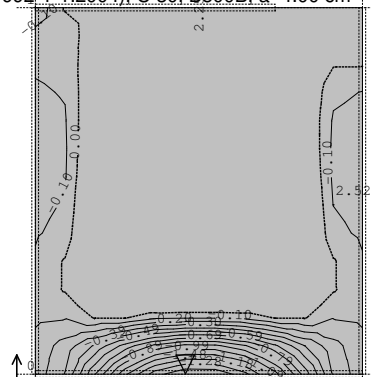
Okvir: H_3
Aa - g.zona - Pravac 2 - max Aa2,g= -1.49 cm²/m

Mjerodavno opterećenje: 1.35xI+1.35xII+1.50xIII+1.50xIV
EC 2 (EN 1992-1-1:2004), C 30, B500B, a=4.00 cm



Okvir: V_3
Aa - d.zona - Pravac 2 - max Aa2,d= 0.70 cm²/m

Mjerodavno opterećenje: 1.35xI+1.35xII+1.50xIII+1.50xIV
EC 2 (EN 1992-1-1:2004), C 30, B500B, a=4.00 cm



Okvir: V_3
Aa - g.zona - Pravac 2 - max Aa2,g= -1.48 cm²/m